



WOODEN HOME PLANS

housesforeurope.com

CONTENT



HFE 01

3



HFE 04

7



HFE 11

11



HFE 12

15



HFE 10

19



HFE 09

23

Note: by clicking the view of any selected project, you will be able to open its page.

HFE 01



HFE01



housesforeurope.com

HFE01





01

02

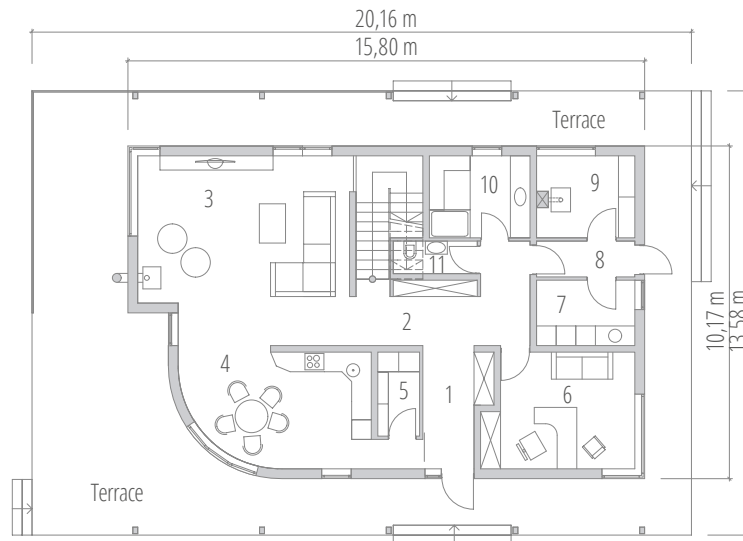
03

HFE 01

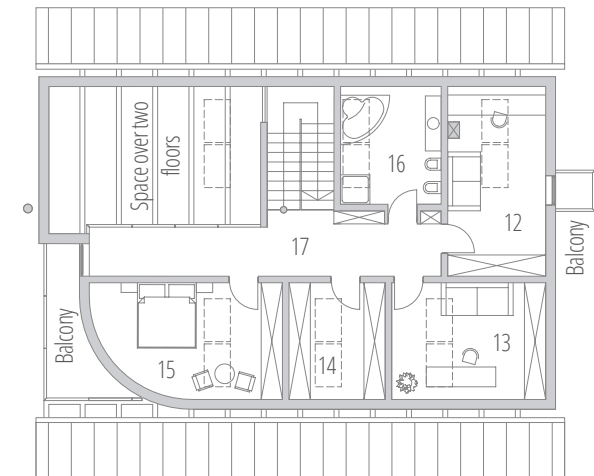
Living-space - 115 m², total area - 200 m², building area - 280 m², terrace - 124 m², balconies - 8 m²

◀ [BACK TO CONTENT](#)

- 1 Hall - 6,88 m²
- 2 Corridor - 12,64 m²
- 3 Living-room - 36,18 m²
- 4 Kitchen, dining-room - 20,93 m²
- 5 Storage room - 3,28 m²
- 6 Workroom - 15,72 m²
- 7 Laundry - 6,01 m²
- 8 Corridor - 3,29 m²
- 9 Boiler - room - 7,45 m²
- 10 Sauna, shower - 7,71 m²
- 11 WC - 2,56 m²
- 12 Child's bedroom - 14,93 m²
- 13 Child's bedroom - 12,86 m²
- 14 Cloakroom - 8,06 m²
- 15 Master bedroom - 14,14 m²
- 16 WC, bathroom - 8,83 m²
- 17 Corridor - 18,35 m²



GROUND FLOOR PLAN



ATTIC FLOOR PLAN

HFE 04



HFE 04



HFE 04



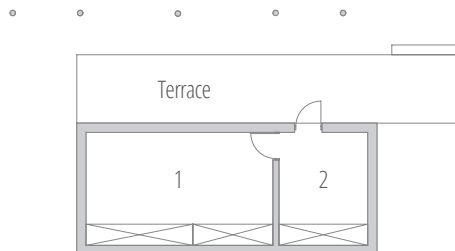


HFE 04

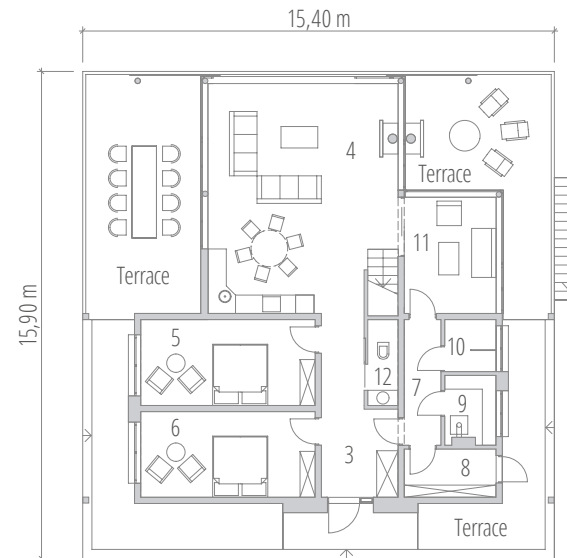
Living-space - 116 m², total area - 197 m², building area - 257 m², terraces - 130 m²

◀ [BACK TO CONTENT](#)

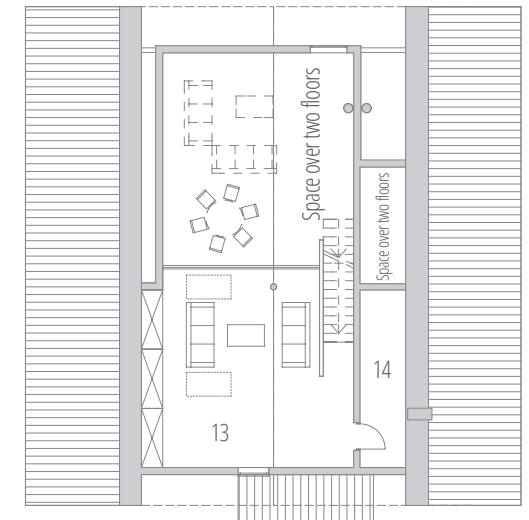
- 1 Storage room - 22,55 m²
- 2 Storage room - 10,71 m²
- 3 Hall - 11,28 m²
- 4 Living-room, kitchen - 44,38 m²
- 5 Lounge- 15,97 m²
- 6 Lounge- 15,94 m²
- 7 Corridor - 4,93 m²
- 8 Changing room - 4,73 m²
- 9 Sauna - 3,63 m²
- 10 Shower - 2,85 m²
- 11 Rest zone - 11,38 m²
- 12 WC - 2,81 m²
- 13 Lounge - 39,76 m²
- 14 Storage room - 6,27 m²



BASEMENT PLAN



GROUND FLOOR PLAN



ATTIC FLOOR PLAN

HFE 11



housesforeurope.com

HFE 11



HFE 11



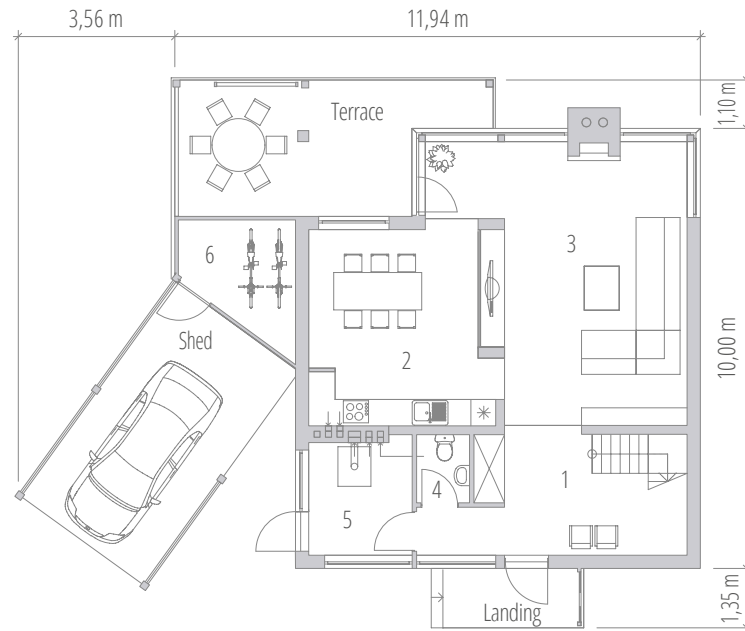


HFE 11

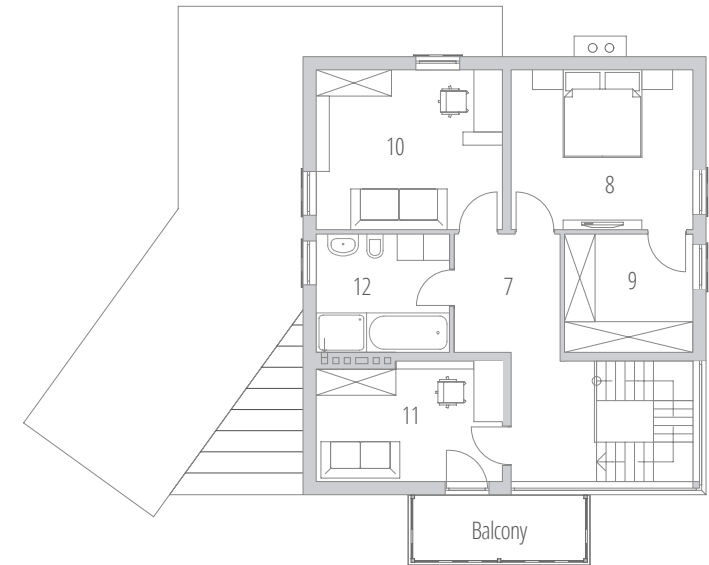
Living-space - 92 m², total area - 147 m², building area - 140 m², shed - 22 m², balcony - 7 m², terrace - 19 m², landing - 5 m²

◀ [BACK TO CONTENT](#)

- 1 Hall - 12,38 m²
- 2 Kitchen - 18,27 m²
- 3 Living-room - 31,05 m²
- 4 WC - 2,00 m²
- 5 Boiler - room - 6,14 m²
- 6 Storage room - 6,19 m²
- 7 Corridor - 12,10 m²
- 8 Master bedroom - 15,13 m²
- 9 Cloakroom - 8,02 m²
- 10 Child's bedroom - 15,50 m²
- 11 Child's bedroom - 11,62 m²
- 12 Bathroom - 8,23 m²



GROUND FLOOR PLAN



FIRST FLOOR PLAN

HFE 12



HFE 12



HFE 12



housesforeurope.com



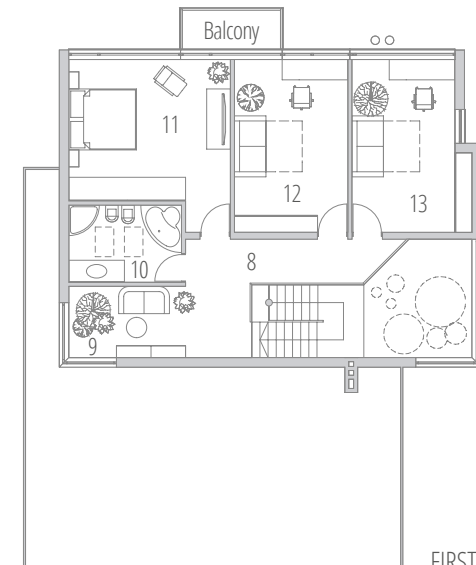
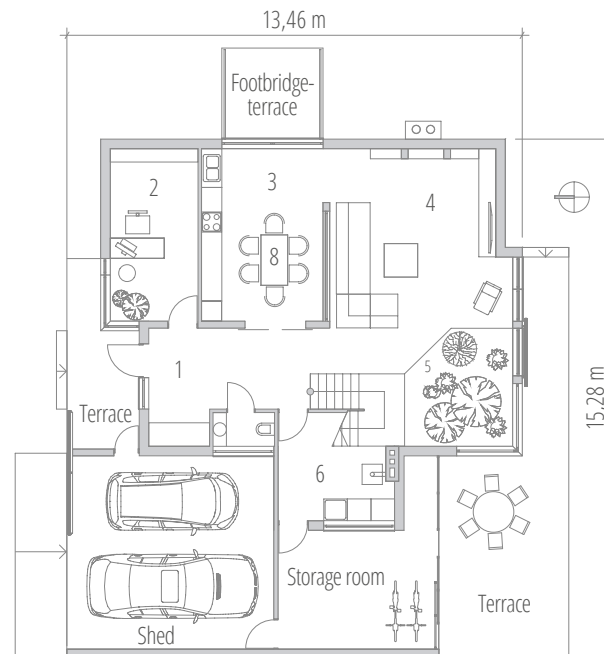
HFE 12

Living-space - 118 m², total area - 182 m², building area -236 m², shed - 35 m², storage room - 19 m², terraces - 40m², footbridge-terrace - 8m², balcony - 4m²

◀ BACK TO CONTENT

- 1 Hall - 14,20 m²
- 2 Workroom - 13,56 m²
- 3 Kitchen, dining-room - 18,35 m²
- 4 Living-room - 30,90 m²
- 5 Winter garden- 10,36 m²
- 6 Boiler - room, laundry - 11,04 m²
- 7 WC - 1,82 m²
- 8 Hall - 12,20m²
- 9 Library - 7,25m²
- 10 Bathroom, WC - 7,58 m²
- 11 Master bedroom - 21,09 m²
- 12 Child's bedroom - 17,08 m²
- 13 Child's bedroom - 16,69 m²

GROUND FLOOR PLAN



FIRST FLOOR PLAN

HFE 10



[housesforeurope.com](https://www.housesforeurope.com)

HFE 10



HFE 10



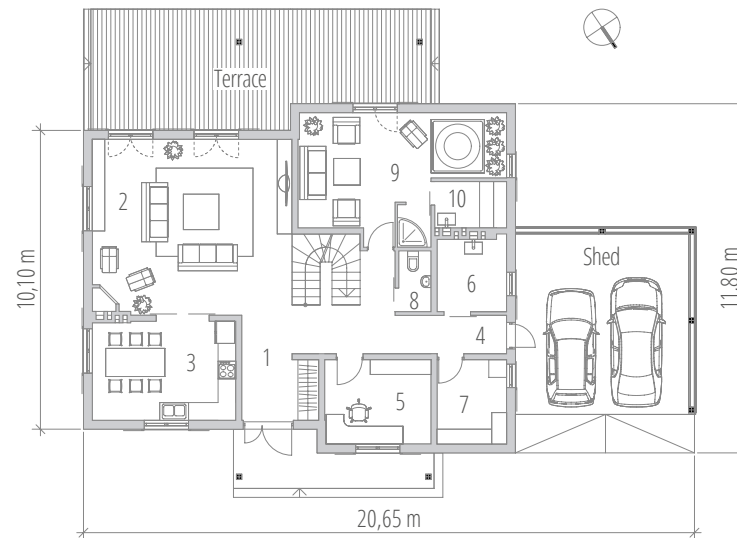


HFE 10

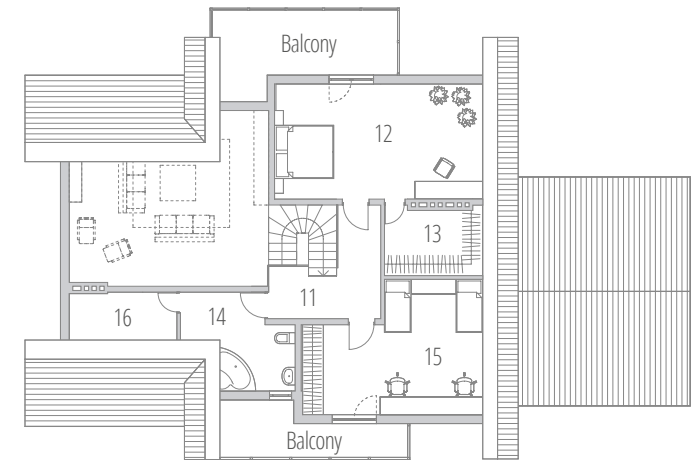
Living-space - 118 m², total area - 218 m², building area - 263 m², shed - 38m², terraces - 58m², balconies -24m²

◀ [BACK TO CONTENT](#)

- 1 Hall - 18,66 m²
- 2 Living-room - 40,00 m²
- 3 Kitchen - 17,00 m²
- 4 Corridor - 4,90m²
- 5 Workroom - 10,20 m²
- 6 Boiler - room - 5,84 m²
- 7 Sandėliukas - 6,69 m²
- 8 WC - 2,26 m²
- 9 Rest zone - 24,62 m²
- 10 Sauna - 3,81 m²
- 11 Hall - 9,63 m²
- 12 Master bedroom - 27,45 m²
- 13 Cloakroom - 7,57 m²
- 14 Bathroom, WC - 9,60 m²
- 15 Children's bedroom - 23,84 m²
- 16 Boxroom - 5,84 m²



GROUND FLOOR PLAN



ATTIC FLOOR PLAN

HFE 09



housesforeurope.com

HFE 09



HFE 09

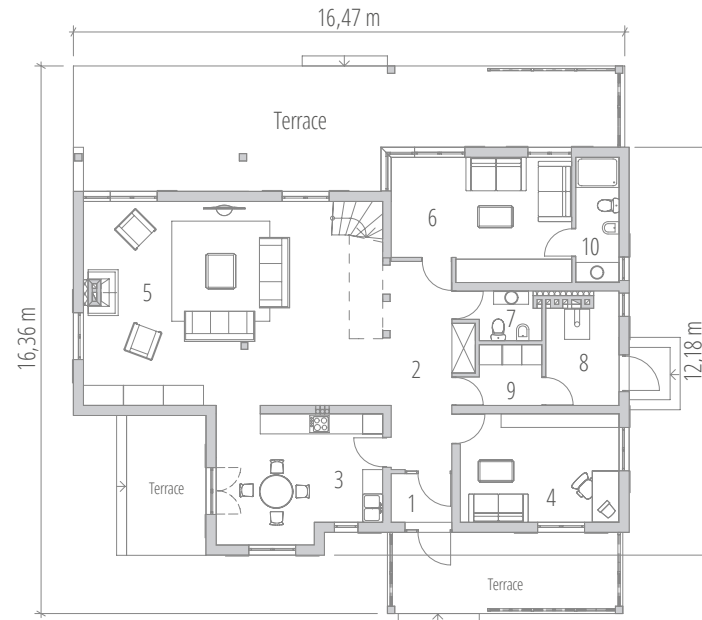


housesforeurope.com



HFE 09

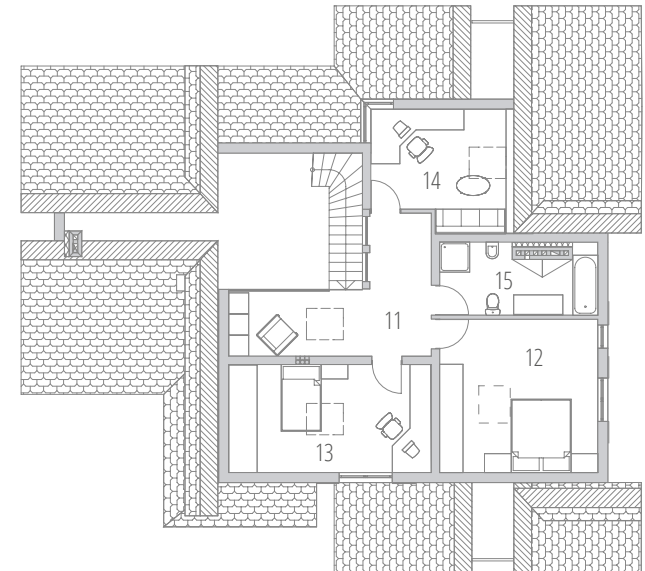
- 1 Tambour - 2,64 m²
- 2 Hall - 12,15 m²
- 3 Kitchen - 18,11 m²
- 4 Workroom - 15,38 m²
- 5 Living-room - 51,35 m²
- 6 Guest - room - 18,72 m²
- 7 WC - 3,47 m²
- 8 Boiler - room - 6,75 m²
- 9 Laundry - 4,19m²
- 10 WC - 4,84 m²
- 11 Hall - 16,36 m²
- 12 Bedroom - 21,83 m²
- 13 Room - 19,70 m²
- 14 Workroom - 14,03 m²
- 15 Bathroom - 9,46 m²



GROUND FLOOR PLAN

Living-space - 159 m², total area - 219 m², building area -253 m², terraces - 82m²

◀ [BACK TO CONTENT](#)



ATTIC FLOOR PLAN